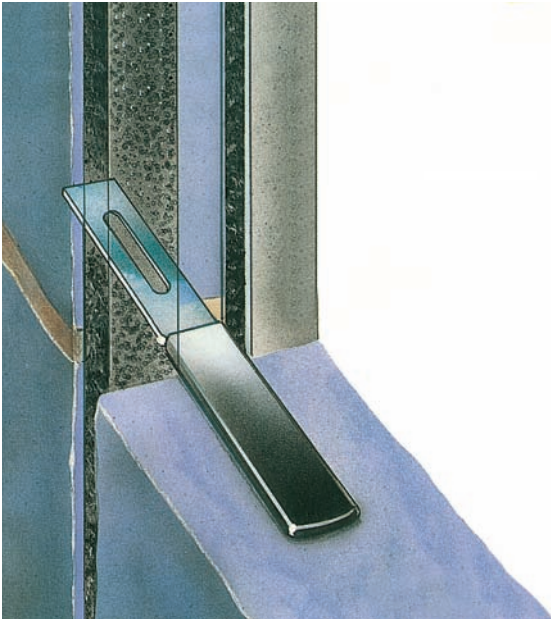
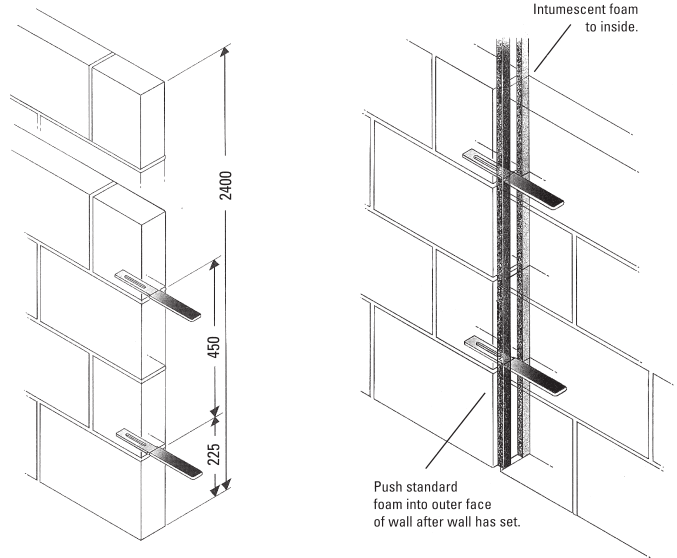


# Wall Expansion Foam Joint System



## COBRA PATENT STAINLESS STEEL MOVEMENT TIES



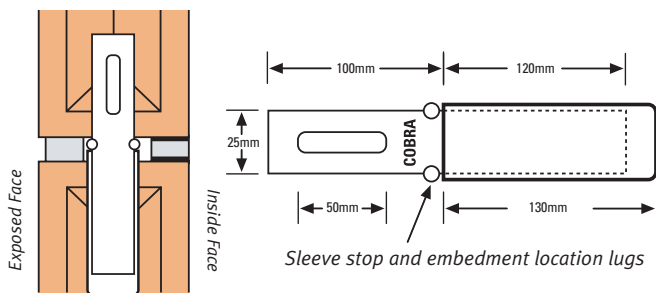
- Cobra Intumescent and Standard Foam Joints offer 0, 2 or 4 hour fire protection options.
- Repairs existing failed wall expansion or compression joints fast.
- Cobra stainless steel controlled expansion wall ties for in-line or 90 degree wall expansion joints.
- Cobra ties suit most standard expansion joint materials and are easy to install at 450mm centres.
- Cobra ties will accommodate up to 10mm vertical movement.
- Column/90° ties are complete with screws, plugs or washers.

## COBRA FOAM WALL EXPANSION JOINTS

REF	DESCRIPTION
<b>CF0</b>	<b>0 hours Fire Seal</b> 2 No. 2.4mm x 30mm Fire Retardant Foam (suit gap 10-16mm)
<b>CF2</b>	<b>2 hours Fire Seal</b> 1 No. 2.4mm x 30mm Intumescent Foam 1 No. 2.4mm x 30mm Fire Retardant Foam (suit gap 10-16mm)
<b>CF4</b>	<b>4 hours Fire Seal</b> 2 No. 2.4mm x 30mm Fire Retardant Foam (suit gap 10-16mm)

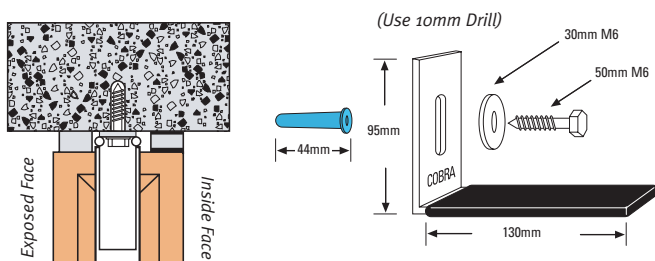
### In-line Ties

Stainless Steel, slotted flat tie: 220 x 25 x 2.5mm

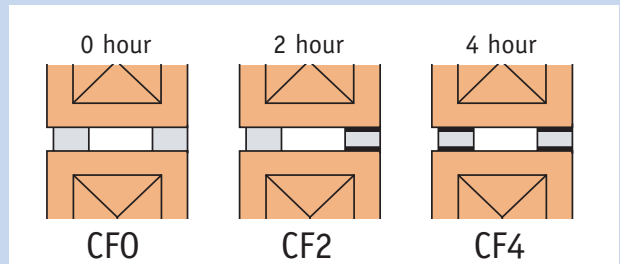


### 90° Ties

Stainless Steel, slotted flat tie: 220 x 25 x 2.5mm



## SELECTION CHART – FIRE SEAL OPTIONS



- Fire Retardant foam**  
2.4m x 30mm (0 hours fire seal)
- Intumescent foam**  
2.4m x 30mm (0 hours fire seal)